



# INSTRUCTION BULLETIN

No. 340804  
Machine: Sentinel  
Published: 03-2006  
Rev. 00

**NOTE: DO NOT DISCARD the Parts List from the Instruction Bulletin. Place the Parts List in the appropriate place in the machine manual for future reference. Retaining the Parts List will make it easier to reorder individual parts and will save the cost of ordering an entire kit.**

*NOTE: Numbers in parenthesis ( ) are reference numbers for parts listed in Bill of Materials.*

Installation instructions for **kit number 9002028**

## SYNOPSIS:

This kit contains the parts needed to install a new conveyor assembly on the Sentinel.  
Please follow step-by-step instructions.

**SPECIAL TOOLS / CONSIDERATIONS: Lift strap or chain capable of holding the weight of the conveyor assembly and a fork lift or boom crane capable of lifting the conveyor assembly.**

(Estimated time to complete: 1 person 3-6 hours, **2 persons (recommended) 2-4 hours**)

## When assembling/disassembling hydraulic components:

1. Thoroughly clean outside of hydraulic components **before** disconnecting hydraulic hoses or fittings to prevent contaminants from entering system.
2. Cap disconnected hoses and open ports to prevent contaminants from entering system.
3. Flush hoses and fittings with air, solvent, or hydraulic fluid to prevent contaminants from entering system.
4. Mark hydraulic hoses with locations of where they are attached. Markings make it easier to reconnect hoses to proper locations.
5. Discard all hydraulic fluid drained from the system. Use only new approved hydraulic fluid to replenish hydraulic reservoir. Hydraulic fluid is potentially dangerous to the environment. Obey all federal, state, and local laws/regulations governing the disposal of environmentally hazardous materials when discarding hydraulic fluid.

## PREPARATION:

1. Park the machine on a clean level surface and engage the parking brake.
2. Lower the conveyor assembly down onto two 6" to 8" blocks.

3. Tilt the hopper back and engage the hopper support.



**WARNING: Lift arm pinch point. Stay clear of hopper lift arms.**



**WARNING: Raised hopper may fall. Engage hopper support pin.**

4. Turn off the machine and remove the key.

**FOR SAFETY: Before leaving or servicing machine, stop on level surface, turn off machine, and remove key.**

## INSTALLATION:

*NOTE: Save all parts removed from the machine unless instructed to do otherwise. These parts are needed to install the new conveyor assembly.*

1. Remove both the left and right side brush doors. Set the brush doors and hardware aside. Refer to Fig. 1.

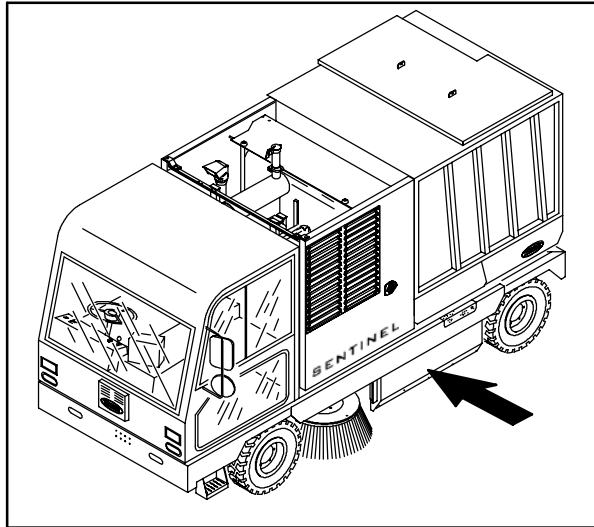


FIG. 1

2. Disconnect the side chains from both sides of the conveyor. Refer to Fig. 2.

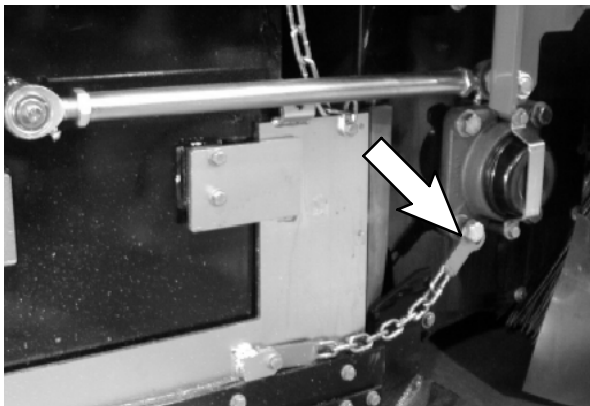


FIG. 2

3. Disconnect the center brush skirt from the front of the conveyor assembly. Rotate the tab on conveyor to the side, dry machine only.

4. Loosen and slide back the conveyor seal strips located at the bottom front and top rear of the conveyor frame. Refer to Fig. 3.

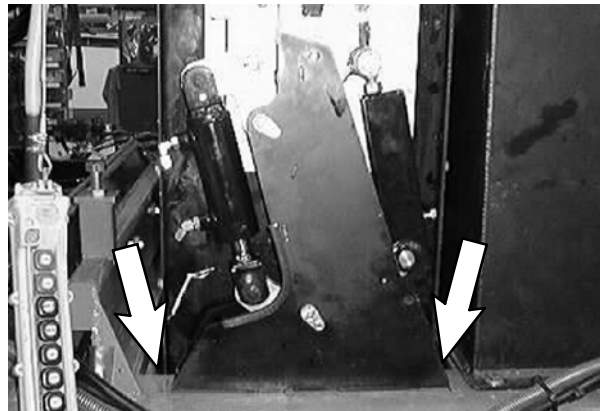


FIG. 3

5. **Machines equipped with the vacuum wand option only:** Disconnect the wires from the vacuum wand door switch located on the left side of the conveyor. Refer to Fig. 4.

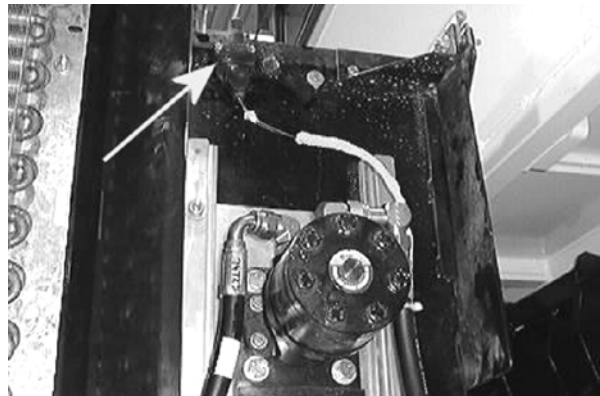


FIG. 4

6. Remove the lower bearing cap retainers and caps and the retaining bolt from the end of the lower shaft. **Do Not** remove the bearing from the conveyor. Set parts removed in this step aside. Refer to Fig. 5.

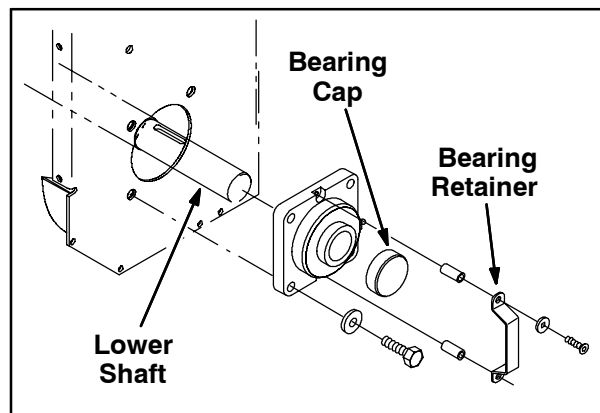


FIG. 5

7. Attach the lift straps, chains, or bar to the large holes located at the top of the left and right panels of the conveyor assembly. Refer to Fig. 6.

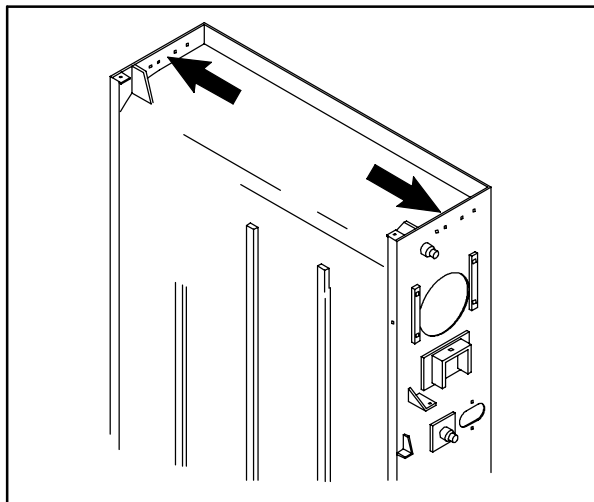


FIG. 6

8. Remove the four bolts from the conveyor motor and remove the conveyor motor from the conveyor assembly. Set the hardware aside. **Do Not** disconnect the hydraulic hoses from the conveyor motor. Set the conveyor motor aside in the radiator area. Refer to Fig. 7.

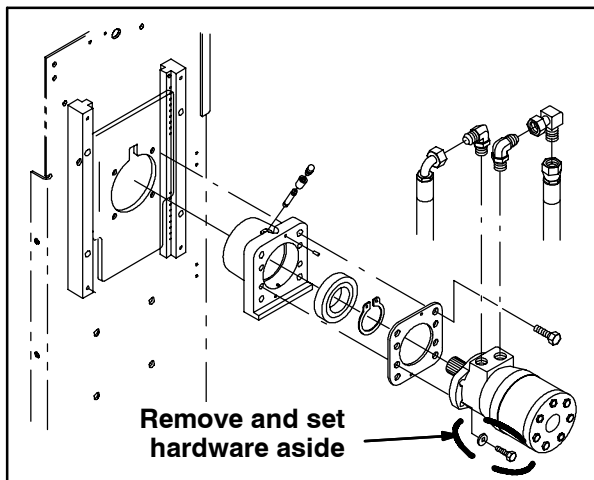


FIG. 7

9. Use a permanent marker or scribe to mark the position of the conveyor towers on the machine. Refer to Fig. 8.

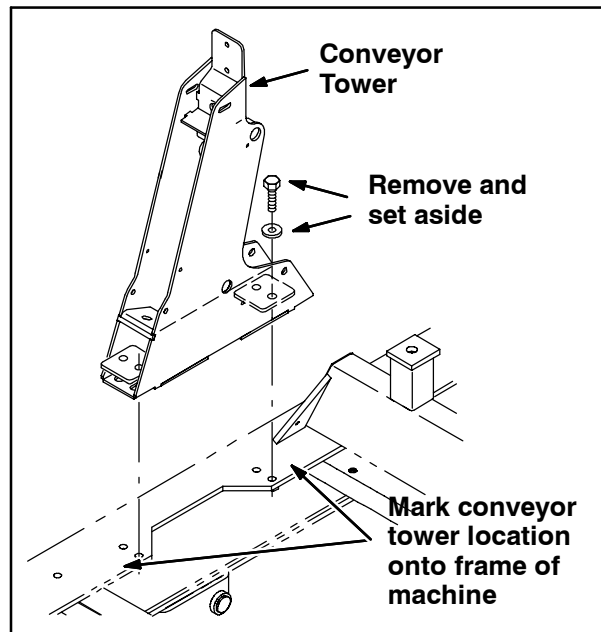


FIG. 8

10. Remove the large bolts holding the rod ends to the conveyor side plates. Refer to Fig. 9.

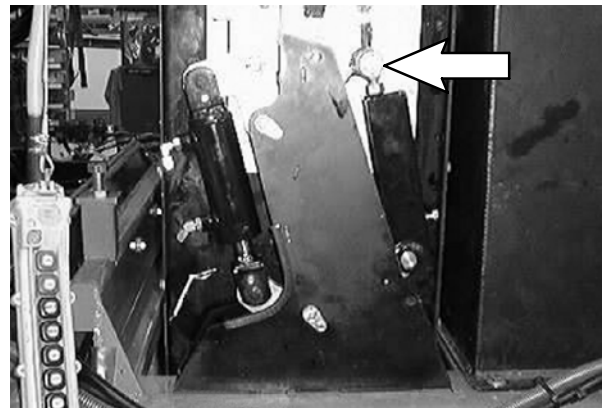


FIG. 9

11. Disconnect the hoses from the conveyor lift cylinders, cap the hoses, and lay the hoses aside. Refer to Fig. 10.

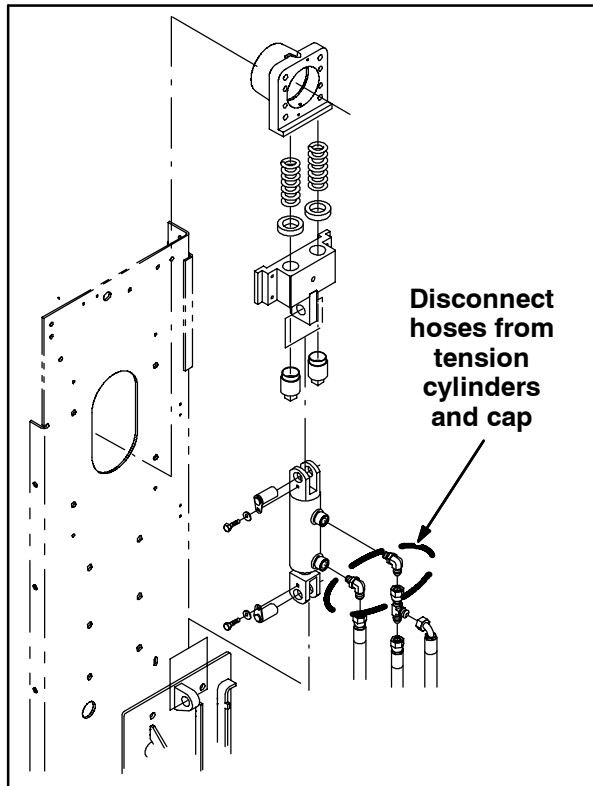


FIG. 10

12. Remove the hardware holding the conveyor towers to the machine. Set the hardware aside. Refer to Fig. 8.
13. Remove the conveyor towers from the conveyor assembly. Set the towers out of the way. **Do Not** disconnect any hydraulic hoses from the conveyor towers. Refer to Fig. 8 and Fig. 9.
14. Lift the conveyor assembly out of the machine. Be sure the conveyor lower bearing does not get caught in any hydraulic hoses to the main brush or on the left side of the machine.

*NOTE: Watch for clearance of the hydraulic hoses for the main brush and the main brush drag links.*

15. Install the new conveyor assembly (1). Reinstall all previously removed components in the reverse order in which they were disassembled from the old conveyor.
16. Pack the bearing caps with grease (4) and reinstall the bearing caps onto the lower shaft. Grease the upper and lower bearings. Refer to the Operators Manual for grease fitting locations.
17. After machine is completely reassembled, run the conveyor and check for proper operation. Make any necessary adjustments. The conveyor assembly should clear the oil tank by 1/16".
18. **Machines equipped with the vacuum wand option only:** Place the machine in the sweep mode and check clearance between the vacuum wand cover and the hopper. The distance between the cover and hopper should be 1/16".
19. Install the hazard labels (2) onto the the conveyor assembly (1). Refer to Fig. 11.



FIG. 11

---

**Bill of Materials for Conveyor, Sentinel, Kit, CI-9002028**

	<b>Ref.</b>	<b>Tennant Part No.</b>	<b>Description</b>	<b>Qty.</b>
▽		9002028	Conveyor, Sentinel, Kit, CI	1
▲	1	1002919	Conveyor Assembly	1
▲	2	760972	Label Hzrd, Conveyor Throws Debris	2
▲	3	765819	Grease	1
▲	4	12695	Skid, [530E], Side Load	1

TENNANT COMPANY  
P. O. Box 1452  
Minneapolis, MN 55440-1452